



**DARLINGTON**  
Borough Council

# Children's Social Care Performance & Quality Assurance Report

Quarter 3 2021/22 (October - December 2021)

Scrutiny

# Scrutiny

## Q3 2021-22 Performance Summary

**Referral:** 67.7% of the referrals completed this year were finalised within 1 working day. This is below the 90% target and the timeliness recorded during Q3 2020/21 (75.6%), however with a similar number of children having their referral outcomed within 1 working day. We have experienced a rise in referrals taking longer than 3 working days to complete, currently above the 5% target with 7.7%.

**Re-Referrals:** Re-referrals continue to remain low with 26 children, from 17 families, being re-referred to social care during Q3 2021/22. Year to date this equates to 10.8% of our referrals during this period having been repeated within 12 months. This is below the internal target of 18%.

**Building Stronger Families:** 165 Early Help Assessments have been completed during Q3 2021/22.

**Missing:** 14 Children in Care (CiC) were reported missing during Q3 2021/22 with a total of 64 episodes. Where children are looked after by other authorities but cared for in Darlington, the ERASE Team have been alerted and provided with relevant information to ensure that the young people have been appropriately placed.

**Children & Families Assessments:** 245 children had a single assessment carried out during Q3 2021/22.

**C&F Timeliness:** Social workers completed 80.0% of the C&F assessments within timescale during Q3 2021/22. This is below our target of 90% and gives a year-to-date completion percentage of 84.6% which is similar to the 85.4% completed in timescale for the same period last year.

**Section 47 enquiries:** 79 section 47 enquires were started during Q3 2021/22 involving 157 children. This is an increase when compared to previous years, but in line with the increase in Strategies held this quarter.

**Child Protection Conference Timeliness:** 92.1% of Initial Child Protection Conferences (ICPC) were held within 15 working days from the strategy meeting / section 47 being initiated, excluding transfer-in conferences, during Q3 2021/22.

**Child Protection Plans:** 89 children were subject to a Child Protection plan (CP) as at the end of December 2021. This is comparable to the 88 children who were subject to CP at the end of December 2020. Darlington currently has a 39.5 rate per 10,000 population for children subject to a CPP.

100.0% of CP cases were allocated to a social worker and all the CP reviews were carried out in timescale. During Q3 2021/22 there were no children ceasing

CP who had been subject to the plan for 2 or more years. At the end of December 2021, the percentage of children becoming subject to a CP plan for a second or subsequent time within 2 years of the previous plan ending was 8.0%, above the 6% target although this is down on the 9.8% by the end of Q2 2021/22.

**Child Protection Statutory visits:** 82.3% of children received a statutory Child Protection (CP) visit during Q3 2021/22 within 10 working days, this is below our target of 90%.

**Children in Care:** 271 children were in care as of December 2021, which is a reduction to the number of children (284) that were in care as of December 2020. During Q3 2021/22 a total of 26 children came into the care of the DBC and a total of 21 children ceased to be in care.

**Children in Care Reviews:** 100.0% of Children in Care (CiC) were allocated to a qualified social worker. 98.4% of the reviews have been completed within required timescales by the end of Q3 2021/22.

**Children in Care Statutory visits:** 89.8% of statutory visits for Children in Care (CiC) were completed in timescale during Q3 2021/22. This is in line with our internal target of 90%.

**Children in Care Placements:** 10.0% of Children in Care (CiC), as of December 2021, have had 3 or more placements within the previous 12 months. This is at the internal target of 10%. 73.5% of our Children in Care aged under 16 (who have been looked after for at least 2.5 years) have been in their current placement continuously for at least 2 years. This is positively above our target of 68.0%. 6.1% of our Children in Care have been placed 20 or more miles away from home as of December 2021, which is positively below our target of 10.0%. This relates to young people who have been placed in residential care due to their disability / placed with family / or placed for adoption, and this provision was not available within 20 miles.

**Initial Health Assessments:** 91.3% of children newly in care were seen by CDDFT within their timescale of 20 days during Q3 2021/22.

**Health and Dental Reviews:** 82.7% of children due a review health assessment by December 2021 have had one completed. 80.4% of Children in Care, that were due a dental check assessment by December 2021 have had one completed. The percentage of children who have refused their medical checks has continued to decrease through the year, with 3.6% refusing their health review and 2.9% refusing their dental review. Although they are refusing, they are continually reminded of the benefits of having a check-up and encouraged to take part.

**Care Leavers:** 100.0% of care leavers were in suitable accommodation at the end of December 2021. The percentage of care leavers who were Not in Education, Employment or Training (NEET) continues to be positively below the target set of 30% at 17.6% at the end of December 2021.

## REFERRALS - TIMELINESS

**DEFINITION** Percentage of referrals completed within 1 working day and over 3 working days. Referrals completed within 1 working day indicates that decisions regarding the services required are made in a timely manner to minimise drift and delay and to ensure that children are safe.

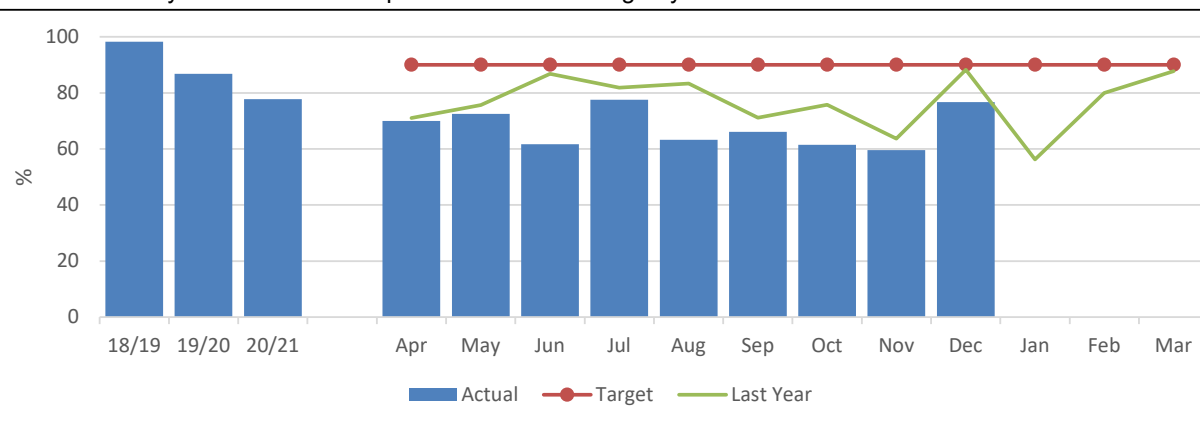
**PERFORMANCE ANALYSIS**

67.7% of the referrals completed this year were finalised within 1 working day. This is below the 90% target and the timeliness recorded during Q3 2020/21 (75.6%), however with a similar number of children having their referral outcomed within 1 working day. We have experienced a rise in referrals taking longer than 3 working days to complete, currently above the 5% target with 7.7%.

All referrals that are completed out of timescale are reviewed by the service manager to ensure delay was unavoidable. No negative impacts on the families have been highlighted because of these delays.

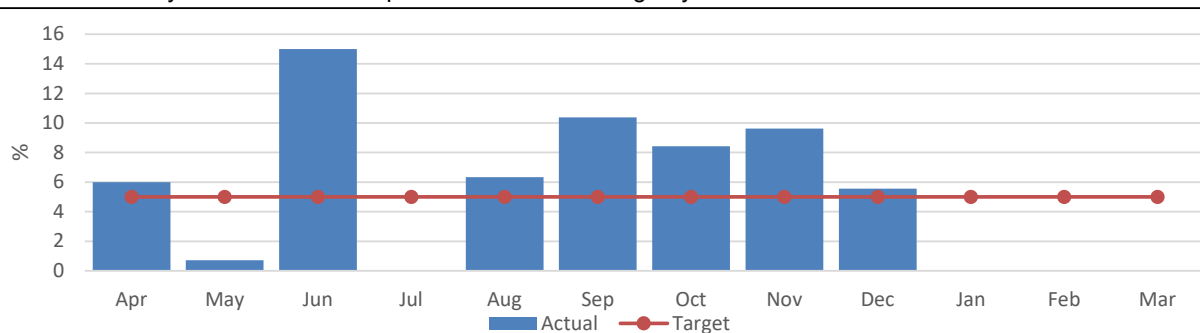
CSC 022	CSC 026
Monthly % of referrals completed within 1 working day.	Monthly % of referrals completed in over 3 working days.

CSC 022: Monthly % of referrals completed within 1 working day.



IN MONTH PERFORMANCE	Target	90%	5%
	Apr-21	70.0	6.0
	May-21	72.5	0.7
	Jun-21	61.7	15.0
	Jul-21	77.6	0.0
	Aug-21	63.3	6.3
	Sep-21	66.0	10.4
	Oct-21	61.5	8.4
	Nov-21	59.6	9.6
	Dec-21	76.7	5.6
	Jan-22		
	Feb-22		
	Mar-22		

CSC 026: Monthly % of referrals completed in over 3 working days.



ANNUAL TREND	2018/19	98.2	0.0
	2019/20	86.8	1.6
	2020/21	77.7	4.7
	2021/22	67.7%	7.7%

## REFERRALS - RE-REFERRALS

<b>DEFINITION</b>	Percentage of re-referrals that are received within 12 months of a previous referral (based on referral start dates) A re-referral to Children's Social Care could be an indication that the previous referral was inappropriately closed down without addressing the initial concerns or issues.
-------------------	--

<b>PERFORMANCE ANALYSIS</b>	<p>Re-referrals continue to remain low with 26 children, from 17 families, being re-referred to social care during Q3 2021/22. Year to date this equates to 10.8% of our referrals during this period having been repeated within 12 months. This is below the internal target of 18%, our statistical neighbour (22.9%), regional (21.6%) and national average (22.7%) (LAIT 2021).</p> <p>When compared with previous years which saw 43 re-referrals during Q3 2019/20 and 30 re-referrals during Q3 2020/21 this shows a positive decrease.</p>
-----------------------------	---

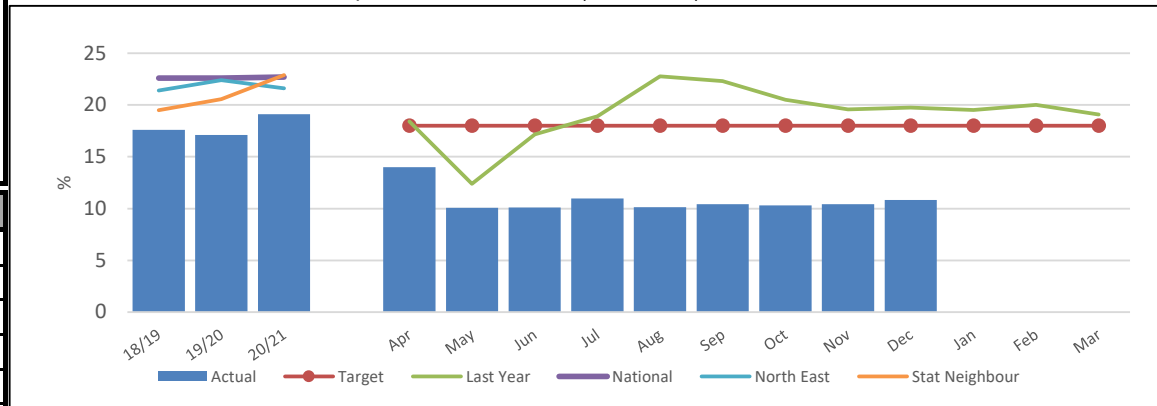
CSC 034	CSC 032	
Monthly number of re-referrals that are repeat within 12 months	% re-referrals that are repeat within 12 months (cumulative)	% of referrals that are re-referrals (monthly)

IN MONTH PERFORMANCE	Target	18%		
	Apr-21	7	14.0	14.0
	May-21	5	10.1	7.2
	Jun-21	6	10.1	10.0
	Jul-21	8	11.0	13.8
	Aug-21	6	10.1	7.6
	Sep-21	12	10.4	11.3
	Oct-21	8	10.3	9.6
	Nov-21	6	10.4	11.5
	Dec-21	12	10.8	13.3
	Jan-22			
	Feb-22			
	Mar-22			

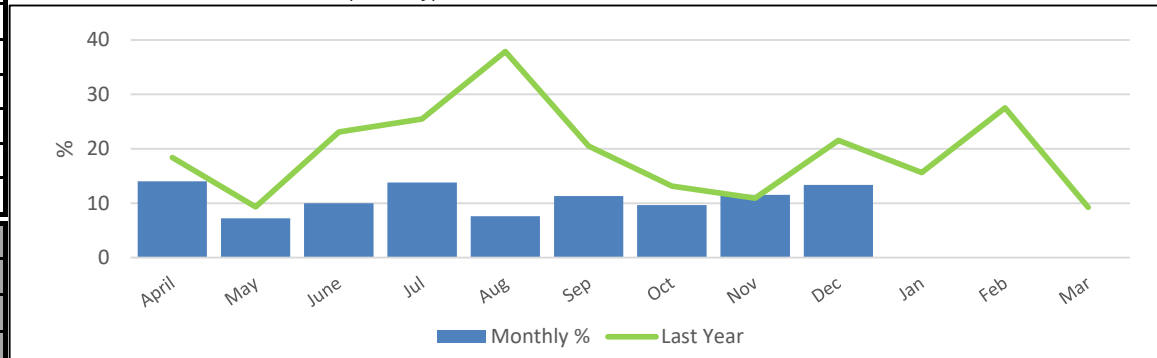
  

ANNUAL TREND	2018/19	205	17.6
	2019/20	171	17.1
	2020/21	143	19.1
	2021/22	70	10.8

CSC 032: % re-referrals that are repeat within 12 months (cumulative)



% of referrals that are re-referrals (monthly)



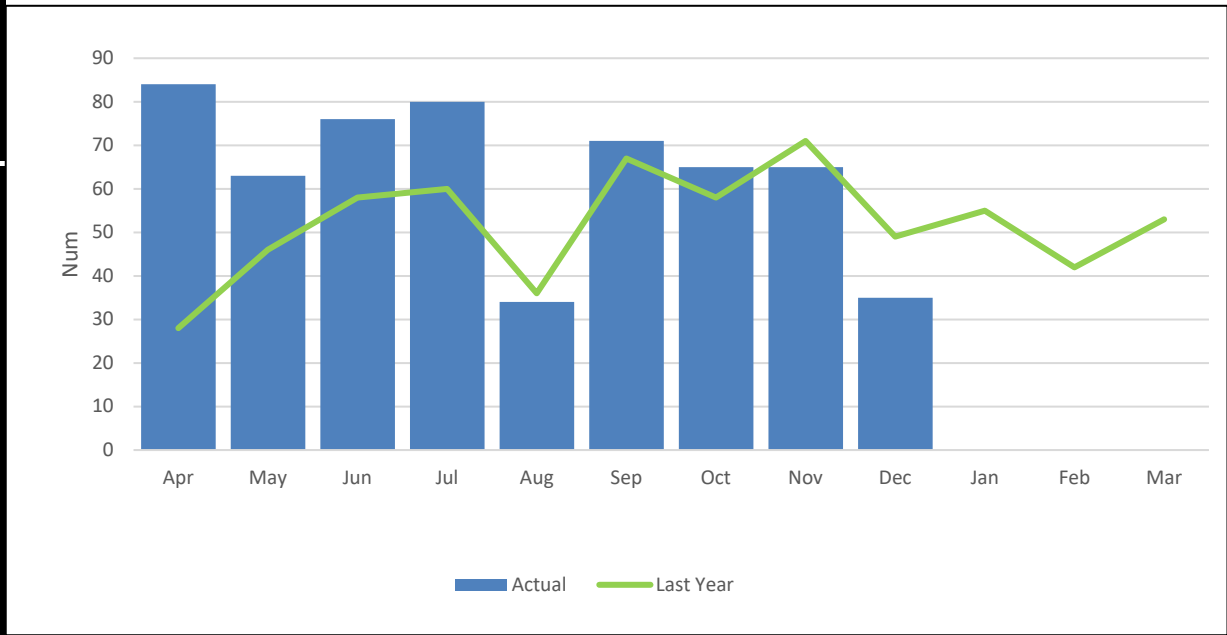
**EARLY HELP ASSESSMENTS - STARTED**

**DEFINITION** The number of individual Early Help Assessments (EHA) started in month and year to date, including those initiated by external agencies. The start date of the EHA is taken from the form created date in Liquid Logic and the start date of the external EHA is taken from the contact date when the agency informed us of the EHA.

**PERFORMANCE ANALYSIS** 165 Early Help Assessments (EHA) were started during Q3 2021/22, 30.3% (50) of which were initiated by external agencies.

**CSC 002**  
Total number of individual EHA's started in month (inc. external)

CSC 002: Total number of individual EHA's started in month (inc. external)



<b>IN MONTH PERFORMANCE</b>	Target	
	Apr-21	84
	May-21	63
	Jun-21	76
	Jul-21	80
	Aug-21	34
	Sep-21	71
	Oct-21	65
	Nov-21	65
	Dec-21	35
	Jan-22	
	Feb-22	
	Mar-22	

<b>ANNUAL TREND</b>	2018/19	869
	2019/20	893
	2020/21	623
	2021/22	573

**MISSING EPISODES**

<b>DEFINITION</b>	The number of episodes of children reported missing in Darlington who are a Child in Care (CiC).□
-------------------	---

<b>PERFORMANCE ANALYSIS</b>	14 Children in Care (CiC) were reported missing during Q3 2021/22 with a total of 64 episodes. Where children are looked after by other authorities but cared for in Darlington, the ERASE Team have been alerted and provided with relevant information to ensure that the young people have been appropriately placed.
-----------------------------	--

CSC 246	
Number of missing relating to Children in Care with DBC	Of which are in a placement more than 20 miles from home

IN MONTH PERFORMANCE		Ep.	Child.	Ep.	Child.
	Apr-21	8	5	1	1
May-21	15	7	1	1	
Jun-21	30	10	5	1	
Jul-21	16	7	1	1	
Aug-21	25	6	5	1	
Sep-21	24	10	5	2	
Oct-21	35	8			
Nov-21	15	8			
Dec-21	14	9			
Jan-22					
Feb-22					
Mar-22					

ANNUAL TREND child counted once		Ep.	Child.	Ep.	Child.
	2018/19	199	36	43	10
	2019/20	129	24	32	10
	2020/21	107	30	15	4
2021/22	182	28	18	2	

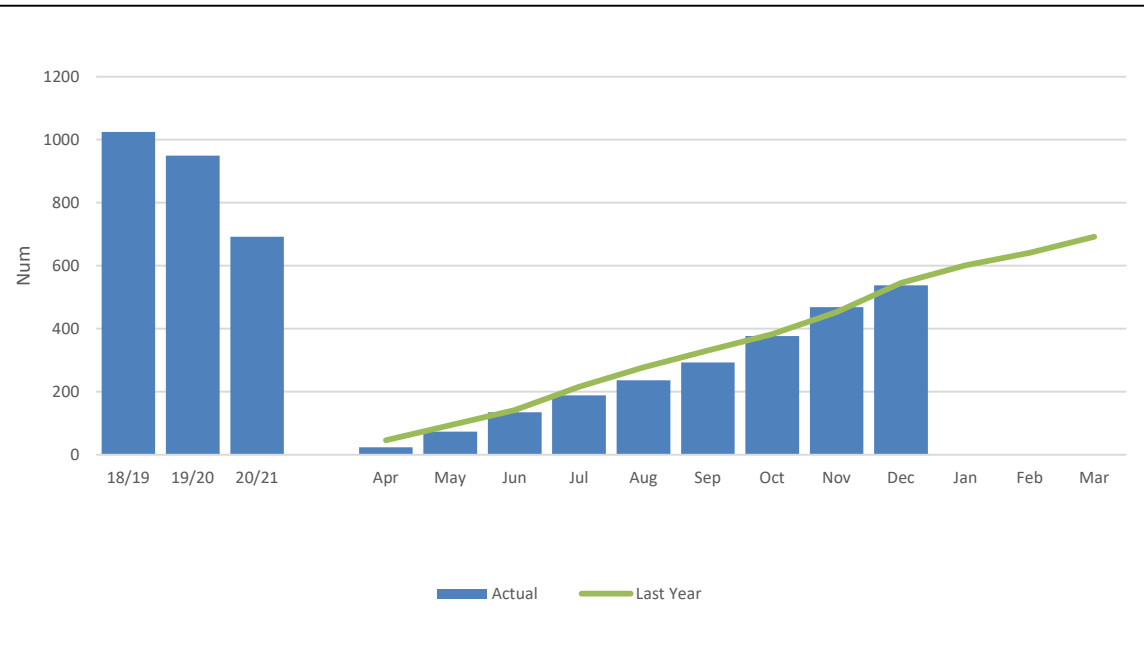
**ASSESSMENTS**

<b>DEFINITION</b>	Monthly and cumulative number of Children & Families assessments completed.
-------------------	---

<b>PERFORMANCE ANALYSIS</b>	245 children had a C&F assessment completed in Q3 2021/22; an increase compared with 215 assessments completed in Q3 2020/21.
-----------------------------	---

<b>CSC 036</b>
Number of children & families assessments completed year to date

CSC 036: Number of children & families assessments completed year to date



<b>IN MONTH PERFORMANCE</b>		
	Apr-21	24
	May-21	73
	Jun-21	135
	Jul-21	189
	Aug-21	236
	Sep-21	293
	Oct-21	377
	Nov-21	469
	Dec-21	538
	Jan-22	
	Feb-22	
	Mar-22	

<b>ANNUAL TREND</b>	2018/19	1,025
	2019/20	950
	2020/21	692
	2021/22	538



**ASSESSMENTS - TIMELINESS**

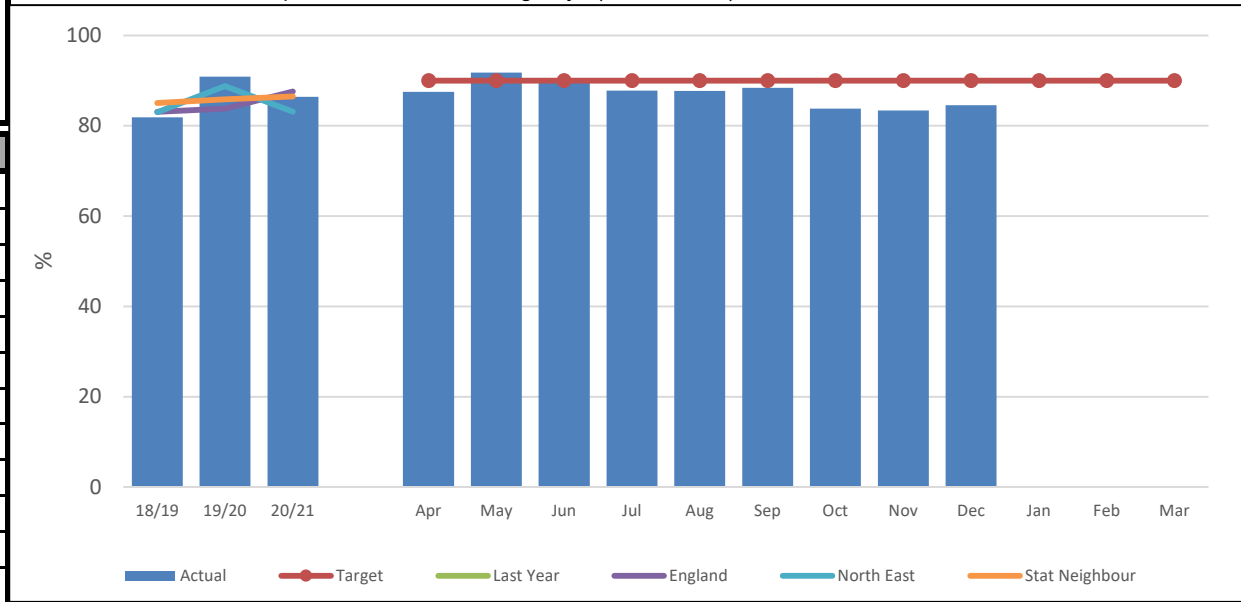
**DEFINITION**  
 Of those assessments completed in a period, the percentage completed within 45 working days. Day zero is the first working day on or after the start date of the referral, or strategy discussion decided to initiate S47 enquiries, or where new information indicates that an assessment should be undertaken. The end date is the first working day on or after the recorded date the Team Manager closes the single assessment. A process indicator as a proxy measure for improved child safety and how quickly services can respond when a child is thought to be at risk of serious harm. Local authorities should investigate and address concerns in a timely and efficient way.

**PERFORMANCE ANALYSIS**  
 During Q3 2021/22, 80.0% of our C&F assessments were completed within timescale. This is below our target of 90% and gives a year to date figure of 84.6% which is in line with the 85.4% in timescale for the same period last year.

CSC 038  
 % C&F Assessments completed within 45 working days (Year to date)

IN MONTH PERFORMANCE	Target	90%
	Apr-21	87.5
	May-21	91.8
	Jun-21	90.4
	Jul-21	87.8
	Aug-21	87.7
	Sep-21	88.4
	Oct-21	83.8
	Nov-21	83.4
	Dec-21	84.6
	Jan-22	
	Feb-22	
	Mar-22	

% C&F Assessments completed within 45 working days (Year to date)



ANNUAL TREND	2018/19	81.9
	2019/20	90.9
	2020/21	86.4
	2021/22	84.6

**SECTION 47 - STARTED**

**DEFINITION** Number of children who have had a section 47 enquiries started monthly and year to date and the actual number of enquires started.

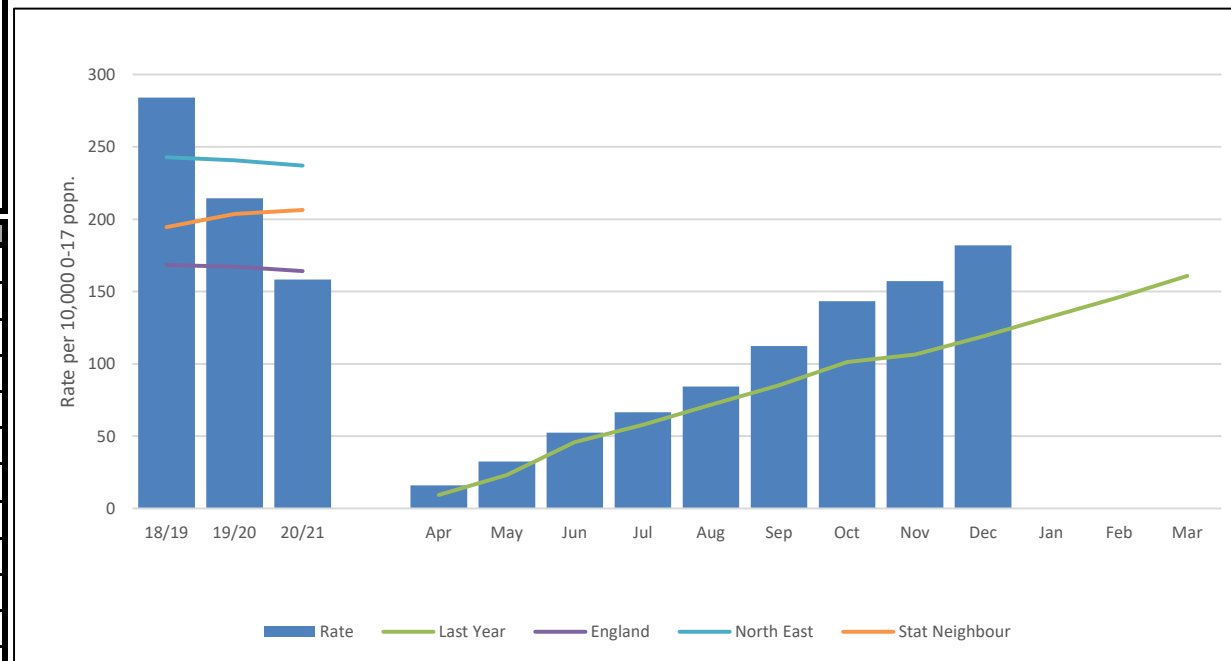
**PERFORMANCE ANALYSIS** 79 section 47 enquires were started during Q3 2021/22 involving 157 children. This is an increase on the 44 section 47 enquiries started in Q3 2020/21, and 53 in Q3 2019/20. The increase is in line with the increase in strategies we have seen held this quarter.

CSC 166	CSC 164
All children who had a section 47 enquires started in the month	Rate of section 47 enquiries started per 10,000 of the 0-17 population (Cumulative)

IN MONTH PERFORMANCE			
	Apr-21	36	16.0
	May-21	37	32.4
	Jun-21	45	52.4
	Jul-21	32	66.6
	Aug-21	40	84.3
	Sep-21	63	112.3
	Oct-21	70	143.4
	Nov-21	31	157.1
	Dec-21	56	182.0
	Jan-22		
	Feb-22		
	Mar-22		

ANNUAL TREND			
	2018/19	426	284.1
	2019/20	646	214.4
	2020/21	484	158.2
	2021/22	410	182.0

Rate of section 47 enquiries started per 10,000 of the 0-17 population (inc. children already on CPP)



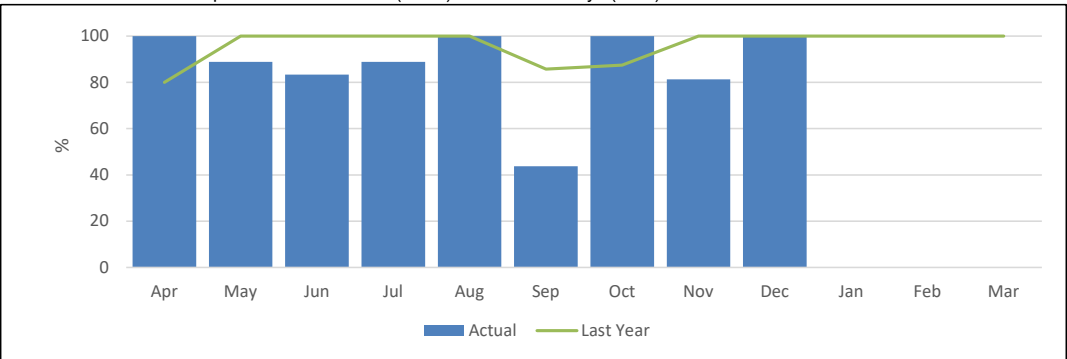
**INITIAL CHILD PROTECTION CONFERENCES - TIMELINESS**

**DEFINITION** Of those ICPC's held within the period (excluding transfer ins), the percentage held within 15 working days of the S47 enquiry. Provides an indication of how quickly the safety of children who are judged to be continuing to, or likely to suffer significant harm is being considered by a multi-agency meeting.

**PERFORMANCE ANALYSIS** 92.1% of Initial Child Protection Conferences (ICPC) were held within 15 working days from the strategy meeting / section 47 being initiated, excluding transfer-in conferences, during Q3 2021/22.

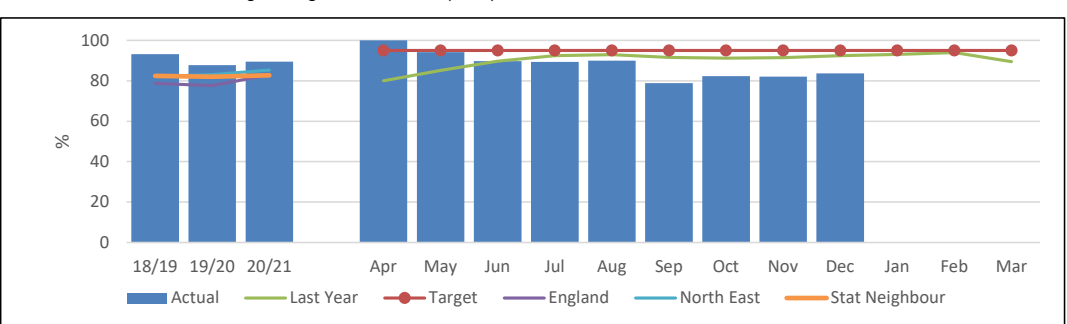
CSC 178	CSC 176
Monthly % of cases recorded in the Safeguarding Unit workbook where Child Protection strategy meeting / S47 start to initial child protection conference (ICPC) are within 15 days (CPP). Excludes transfer-in conferences.	% of cases where the initial child protection conference (ICPC) was within 15 days of the initiating strategy discussion / S47 start recorded in the Safeguarding Unit workbook (CPP). This EXCLUDES transfer-in conferences. Year to Date

CSC 178: Monthly % of cases recorded in the Safeguarding Unit workbook where Child Protection strategy meeting / S47 start to initial child protection conference (ICPC) are within 15 days (CPP). Excludes transfer-in conferences.



IN MONTH PERFORMANCE	Target	100	95	
	Apr-21	100.0	100.0	100.0
	May-21	88.9	88.9	94.1
	Jun-21	83.3	83.3	89.7
	Jul-21	88.9	88.9	89.4
	Aug-21	100.0	100.0	90.0
	Sep-21	43.8	43.8	78.8
	Oct-21	100.0	100.0	82.3
	Nov-21	81.3	81.3	82.1
	Dec-21	100.0	100.0	83.7
	Jan-22			
	Feb-22			
	Mar-22			

CSC 176: % of cases where the initial child protection conference (ICPC) was within 15 days of the initiating strategy discussion / S47 start recorded in the Safeguarding Unit workbook (CPP). This EXCLUDES transfer-in conferences. Year to Date



ANNUAL TREND	2018/19	95.4	93.2
	2019/20	89.5	87.7
	2020/21	94.4	89.5
	2021/22	100.0	83.7

**CHILD PROTECTION**

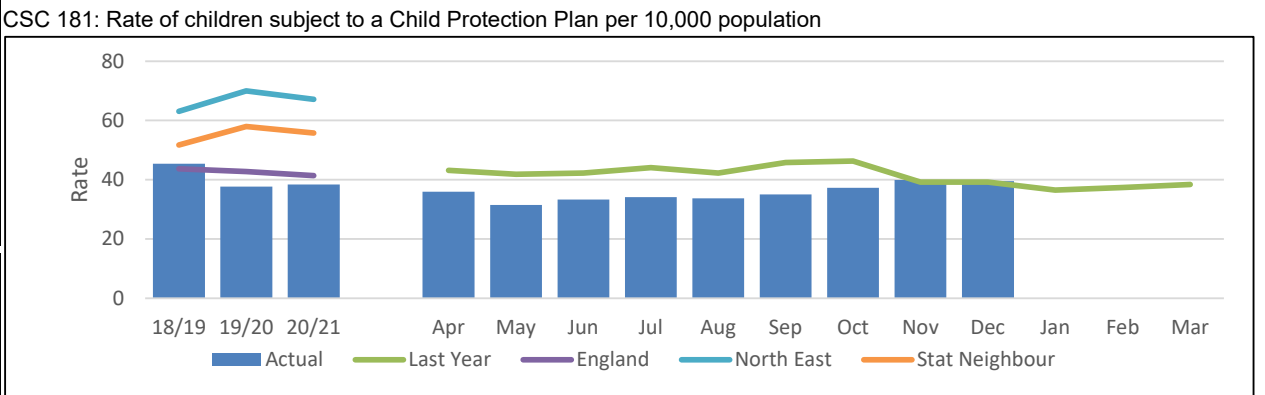
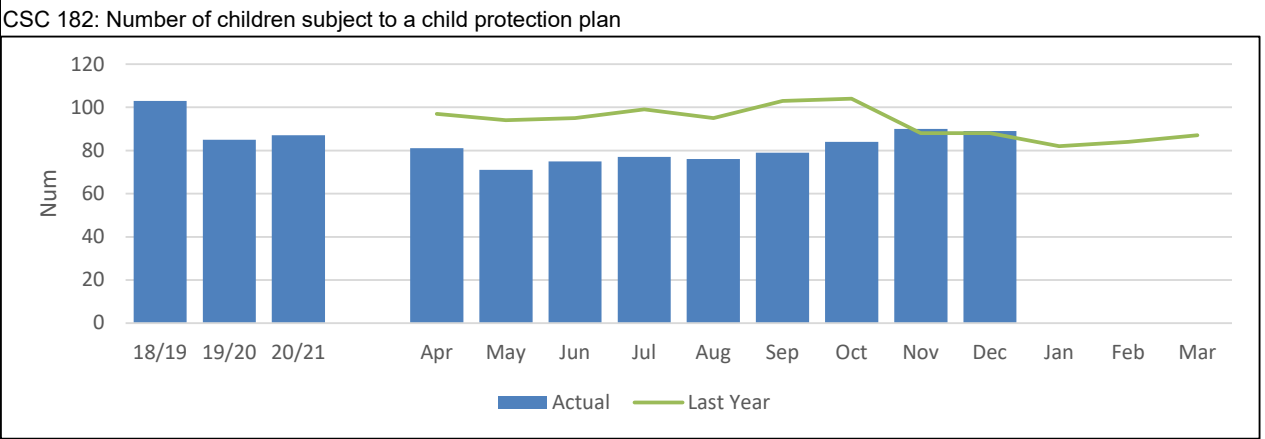
<b>DEFINITION</b>	Number of children subject to a Child Protection plan at the end of the month.
-------------------	--

<b>PERFORMANCE ANALYSIS</b>	89 children were subject to a Child Protection plan (CP) as at the end of December 2021. This is comparable to the 88 children who were subject to CP at the end of December 2020. Darlington currently has a 39.5 rate per 10,000 population for children subject to a CPP which is lower than the regional average (67.2), statistical neighbour (55.8) and the national average (41.4) as reported in the 2021 LAIT.
-----------------------------	---

	CSC 182	CSC 181
	Number of children subject to a child protection plan	Rate of children subject to a Child Protection Plan per 10,000 population

<b>IN MONTH PERFORMANCE</b>			
	Apr-21	81	36.0
	May-21	71	31.5
	Jun-21	75	33.3
	Jul-21	77	34.2
	Aug-21	76	33.7
	Sep-21	79	35.1
	Oct-21	84	37.3
	Nov-21	90	40.0
	Dec-21	89	39.5
	Jan-22		
	Feb-22		
	Mar-22		

<b>ANNUAL TREND</b>			
	2018/19	103	45.7
	2019/20	85	37.7
	2020/21	87	38.4
2021/22	89	39.5	



**CHILD PROTECTION - ALLOCATION & REVIEWS**

**DEFINITION**

The percentage of children subject to a Child Protection Plan at the end of the month and who at that date had had a Plan continuously for at least the previous 3 months, whose case was reviewed within the required timescales.

Reviews are a key element in delivering Child Protection Plans and effective reviews should ensure the provision of good quality interventions. This indicator is a proxy for the measurement of effectiveness of the interventions provided to children subject to a Child Protection Plan. "Working Together to Safeguard Children" guidance requires that the first review should be within 3 months of the initial child protection conference and thereafter at intervals of no more than 6 months.

**PERFORMANCE ANALYSIS**

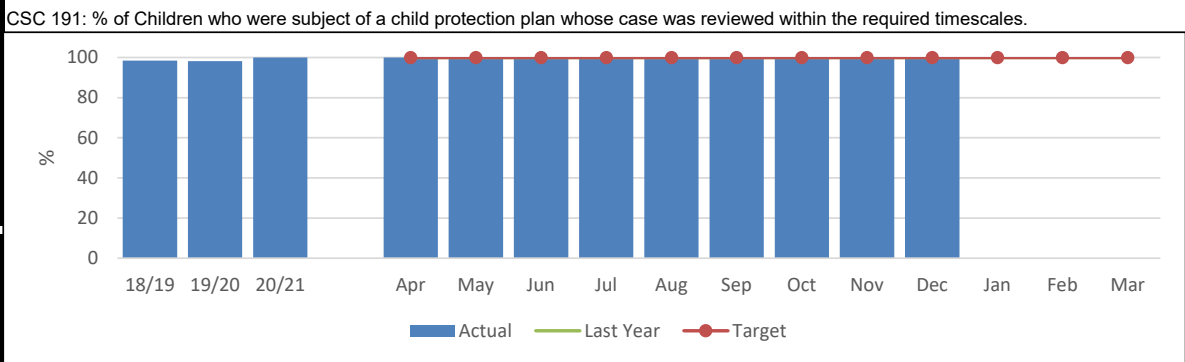
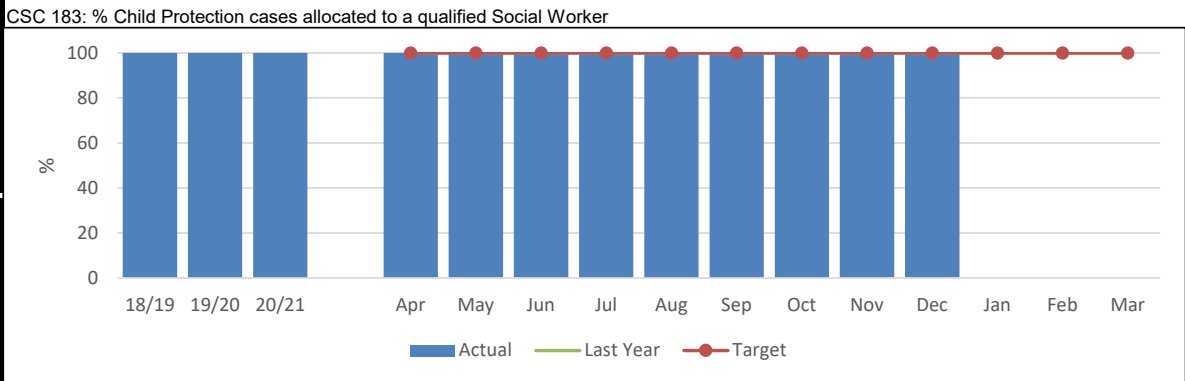
100% of Child Protection Cases were allocated to a qualified social worker.

100% of Child Protection reviews have been completed within the required timescales.

Performance remains higher than statistical neighbours (91.8%), regional (91.0%) and national averages (93.2%) as reported in the 2021 LAIT.

CSC 183	CSC 191
% Child Protection cases allocated to a qualified Social Worker	% of Children who were subject of a child protection plan whose case was reviewed within the required timescales.

IN MONTH PERFORMANCE	Target	100	100	
	Apr-21	100.0	100.0	100.0
	May-21	100.0	100.0	100.0
	Jun-21	100.0	100.0	100.0
	Jul-21	100.0	100.0	100.0
	Aug-21	100.0	100.0	100.0
	Sep-21	100.0	100.0	100.0
	Oct-21	100.0	100.0	100.0
	Nov-21	100.0	100.0	100.0
	Dec-21	100.0	100.0	100.0
	Jan-22			
	Feb-22			
	Mar-22			



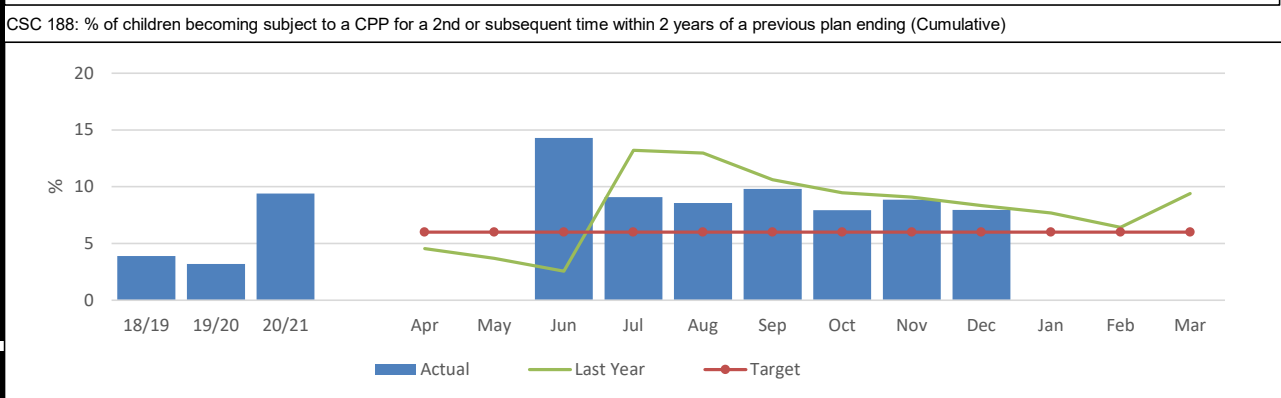
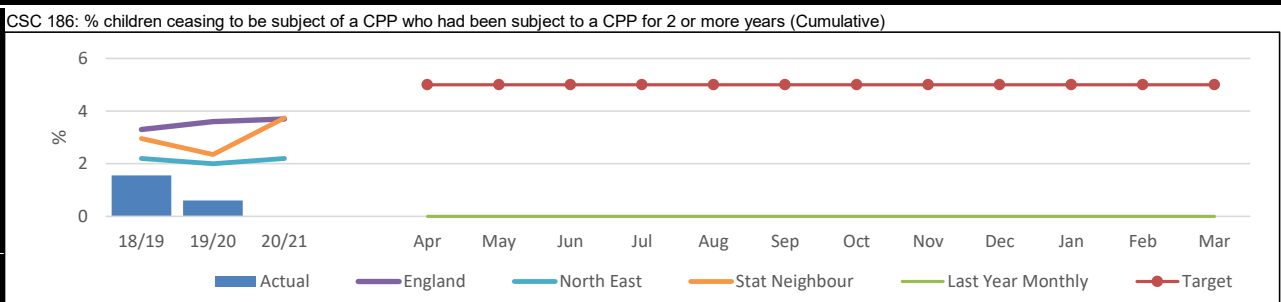
ANNUAL TREND	2018/19	100.0	98.4
	2019/20	100.0	98.2
	2020/21	100.0	100.0
	2021/22	100.0	100.0

**CHILD PROTECTION - TIME PERIODS**

**DEFINITION**  
 Percentage of children ceasing to be subject to a Child Protection Plan who had been subject to a Plan for 2 or more years, and percentage of children becoming subject to a Child Protection Plan for the 2nd or subsequent time within a) 2 years of a previous plan, and b) with a previous plan at any point.  
 These indicators reflect the underlying principle that professionals should be working towards specified outcomes which, if implemented effectively, should lead to all children not needing to be the subject of a Child Protection Plan within a maximum of two years, or becoming subject of a Child Protection Plan for a second or subsequent time.

**PERFORMANCE ANALYSIS**  
 8.0% of children became subject to a CP plan for a second or subsequent time within 2 years of the previous plan ending. This is above our target of 6% but positive decrease when compared to the percentage at December 2020 (8.3%).  
 Year to date no child has ceased to be subject to a CP plan who had been subject to the plan for 2 or more years and we continue to remain below our target of 5%.

	CSC 186	CSC 188
	% children ceasing to be subject of a CPP who had been subject to a CPP for 2 or more years (Cumulative)	% of children becoming subject to a CPP for a 2nd or subsequent time within 2 years of a previous plan ending (Cumulative)
<b>IN MONTH PERFORMANCE</b>	<b>Target</b>	<b>5%</b>
	Apr-21	0.0
	May-21	0.0
	Jun-21	0.0
	Jul-21	0.0
	Aug-21	0.0
	Sep-21	0.0
	Oct-21	0.0
	Nov-21	0.0
	Dec-21	0.0
	Jan-22	0.0
	Feb-22	0.0
	Mar-22	0.0
<b>ANNUAL TREND</b>	2018/19	1.6
	2019/20	0.6
	2020/21	0.0
	2021/22	0.0

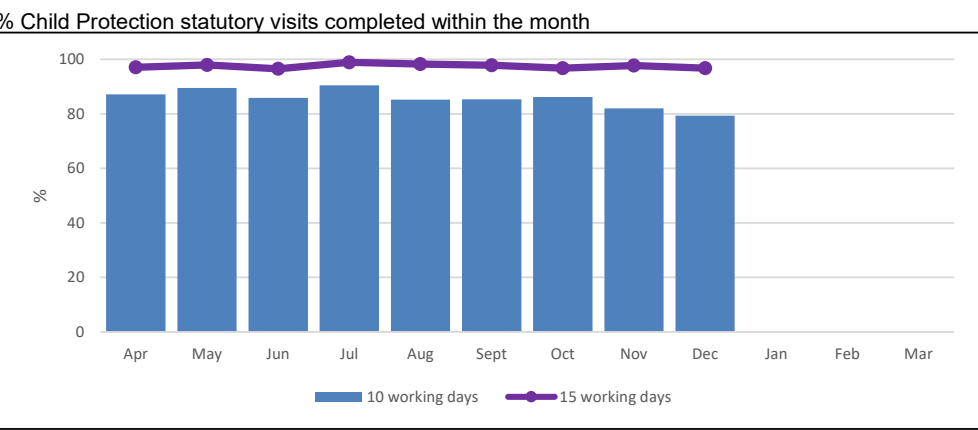


## CHILD PROTECTION - STATUTORY VISITS

**DEFINITION** Percentage of children subject to a Child Protection Plan who had all statutory visits carried out within timescales and percentage of Child Protection statutory visits completed within timescale monthly and year to date.

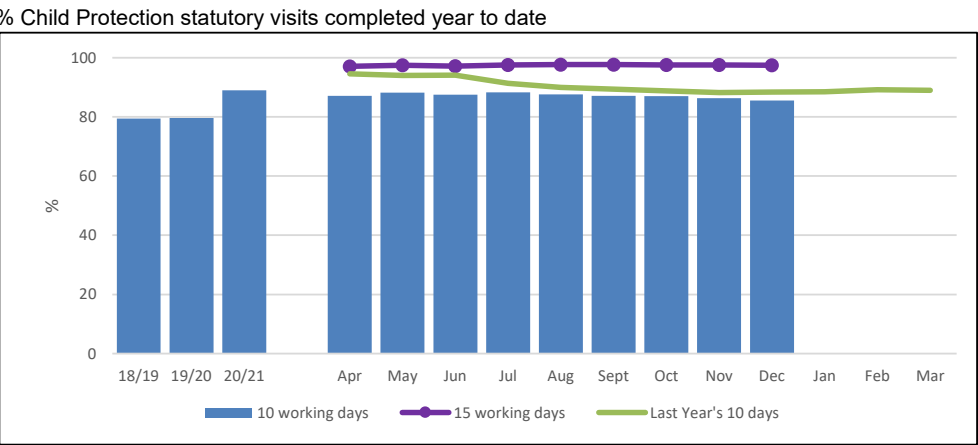
**PERFORMANCE ANALYSIS** 82.3% of Child Protection statutory visits were completed within 10 working days in Q3 2021/22 and 97.1% of the visits were completed within 15 working days.

CSC 252a		CSC 252b	
% Child Protection statutory visits completed within 10 working days within the month	% Child Protection statutory visits completed within 15 working days within the month	% Child Protection statutory visits completed within 10 working days year to date (cumulative)	% Child Protection statutory visits completed within 15 working days year to date (cumulative)



**IN MONTH PERFORMANCE**

Target	90	90	90	90
Apr-21	87.1	97.1	87.1	97.1
May-21	89.5	97.9	88.3	97.5
Jun-21	85.9	96.5	87.5	97.2
Jul-21	90.4	98.9	88.3	97.6
Aug-21	85.3	98.2	87.6	97.7
Sep-21	85.3	97.8	87.2	97.7
Oct-21	86.2	96.7	87.0	97.6
Nov-21	82.0	97.7	86.4	97.6
Dec-21	79.3	96.7	85.5	97.5
Jan-22				
Feb-22				
Mar-22				



**ANNUAL TREND**

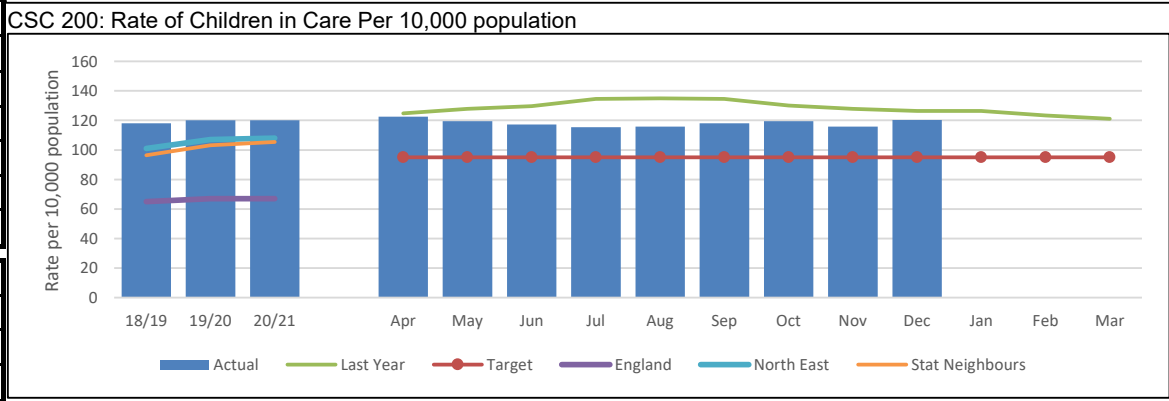
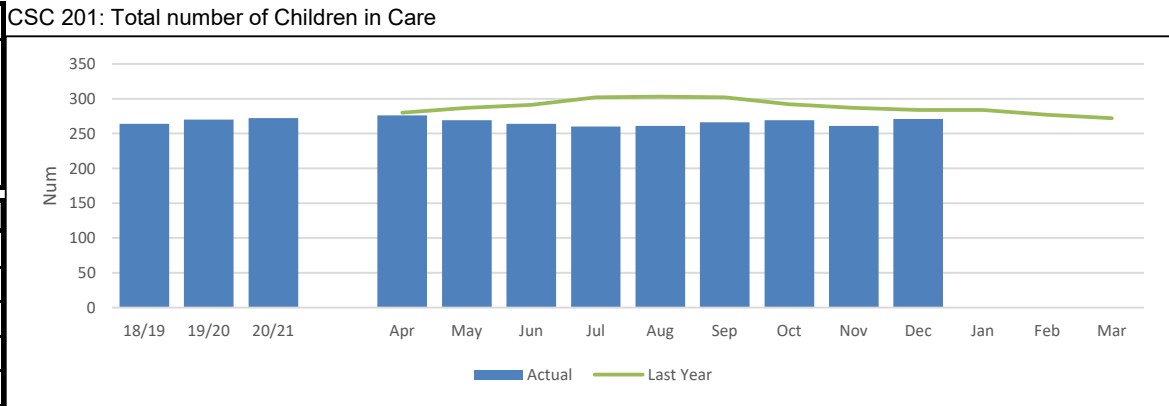
2018/19	79.3	95.7	79.3	95.7
2019/20	79.6	92.0	79.6	93.8
2020/21	89.0	98.4	89.0	98.4
2021/22	79.3	96.7	85.5	97.5

## CHILDREN IN CARE

<b>DEFINITION</b>	Number of Children in Care at the end of each month.
-------------------	--

<b>PERFORMANCE ANALYSIS</b>	271 children were in care as at December 2021 which is a 4.6% reduction from the 284 children in care at the end of December 2020.
-----------------------------	--

IN MONTH PERFORMANCE	Target	CSC 201	CSC 200
			Total number of Children in Care
			<b>95</b>
	Apr-21	276	122.5
	May-21	269	119.4
	Jun-21	264	117.2
	Jul-21	260	115.4
	Aug-21	261	115.9
	Sep-21	266	118.1
	Oct-21	269	119.4
	Nov-21	261	115.9
	Dec-21	271	120.3
	Jan-22		
	Feb-22		
	Mar-22		
ANNUAL TREND	2018/19	264	118.0
	2019/20	270	120.0
	2020/21	272	121.1
	2021/22	271	120.3





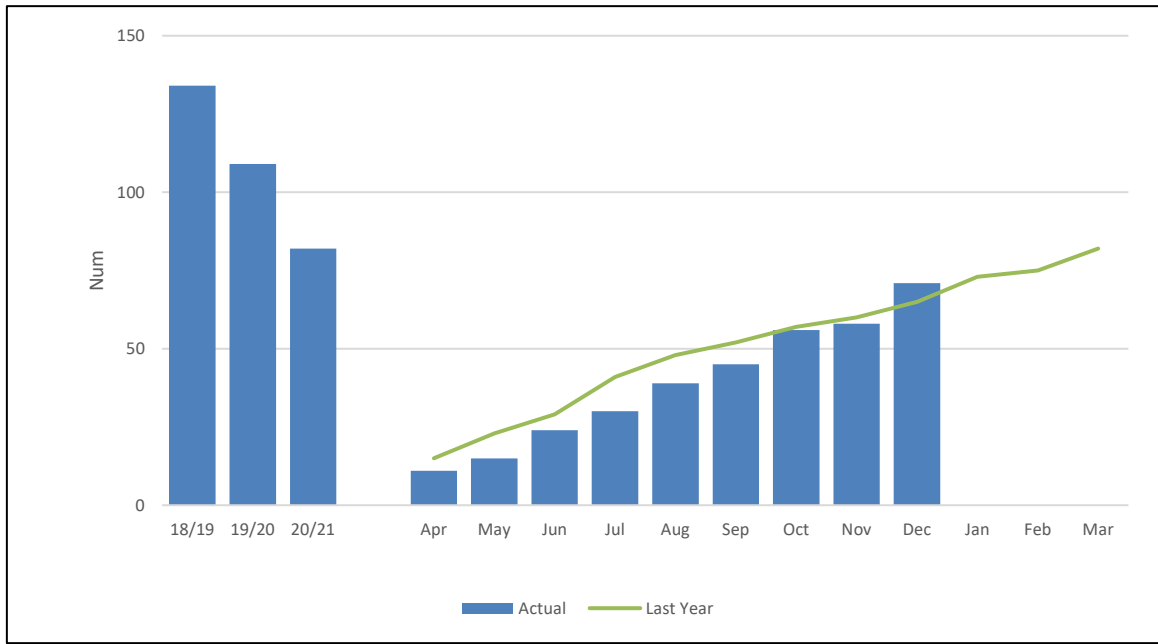
## CHILDREN IN CARE - COMING INTO CARE

<b>DEFINITION</b>	Number of children coming into the care of the local authority during the month and year to date and their first placement type.
-------------------	--

<b>PERFORMANCE ANALYSIS</b>	26 children came into care in Q3 2021/22, taking our year to date total to 71 children. This is a 9.2% increase when compared with the 65 children who came into care between April and December 2020, but a 18.4% decrease compared to between April and December 2019 (87 children) and a 31.7% decrease compared to between April and December 2018 (104 children).
-----------------------------	--

CSC 209	CSC 208
Monthly number of new cases of children coming into care	Total number of new cases of children coming into care within the year

Total number of new cases of children coming into care within the year



<b>IN MONTH PERFORMANCE</b>			
	Apr-21	11	11
	May-21	4	15
	Jun-21	9	24
	Jul-21	6	30
	Aug-21	9	39
	Sep-21	6	45
	Oct-21	11	56
	Nov-21	2	58
	Dec-21	13	71
Jan-22			
Feb-22			
Mar-22			

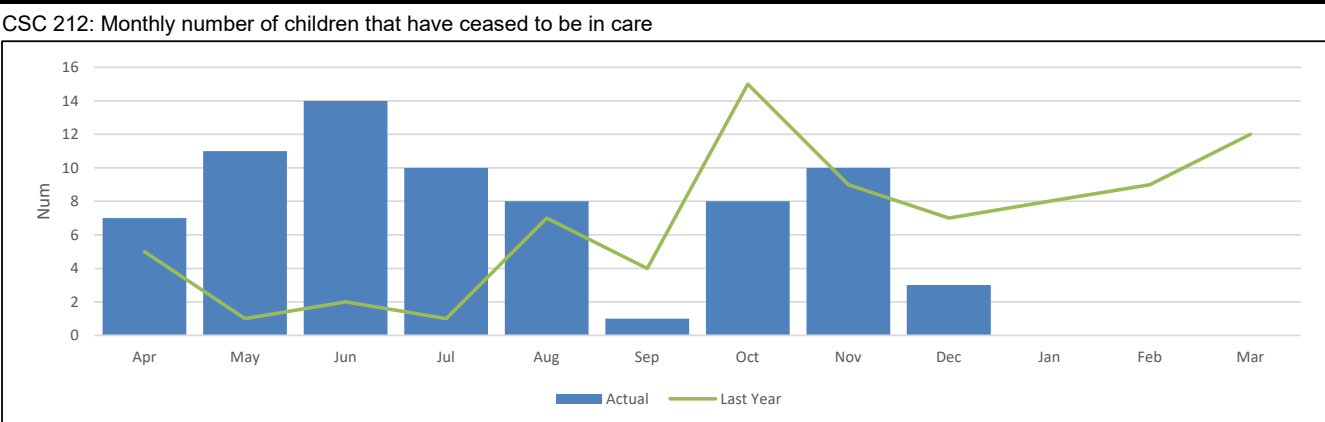
<b>ANNUAL TREND</b>			
	2018/19	134	134
	2019/20	109	109
	2020/21	82	82
2021/22	71	71	

## CHILDREN IN CARE - CEASING CARE

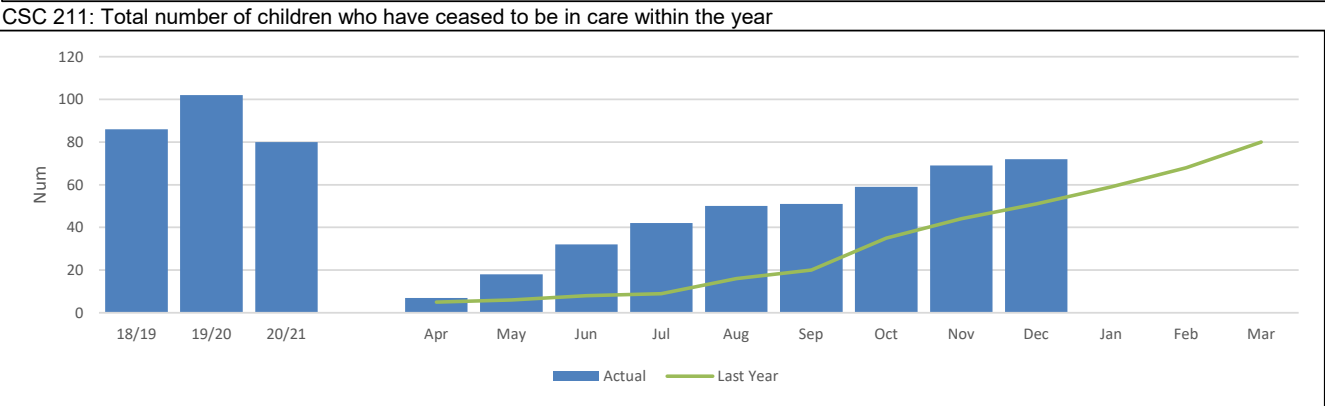
<b>DEFINITION</b>	Number of children ceasing to be a Child in Care during each month and year to date and their destination when they ceased being in care.
-------------------	---

<b>PERFORMANCE ANALYSIS</b>	<p>21 children and young people ceased to be in care during Q3 2021/22, taking our year to date total to 72 children. This is a large increase when compared with the 51 children who ceased between April and December 2020, and similar to the 71 children who ceased care between April and December 2019 and 69 children between April and December 2018.</p> <p>Of the 21 children who did cease CiC:</p> <ul style="list-style-type: none"> <li>14.3% were young people ceasing as they turned 18 and became a care leaver.</li> <li>23.8% of the children were adopted.</li> <li>33.3% of children had a Special Guardianship Order (SGO) / Child Arrangement Order (CAO) granted to a relative.</li> <li>28.6% of the children returned home to their parent.</li> </ul>
-----------------------------	--

	CSC 212	CSC 211
	Monthly number of children that have ceased to be in care	Total number of children who have ceased to be in care within the year



<b>IN MONTH PERFORMANCE</b>	Apr-21	7	7
	May-21	11	18
	Jun-21	14	32
	Jul-21	10	42
	Aug-21	8	50
	Sep-21	1	51
	Oct-21	8	59
	Nov-21	10	69
	Dec-21	3	72
	Jan-22		
	Feb-22		
	Mar-22		



<b>ANNUAL TREND</b>	2018/19	86	86
	2019/20	102	102
	2020/21	80	80
	2021/22	72	72

**CHILDREN IN CARE - ALLOCATION & REVIEWS**

**DEFINITION**

The percentage of Children in Care cases which should have been reviewed during the year ending 31 March that were reviewed on time during the year and the percentage of Children in Care cases that were allocated to a qualified Social Worker at the end of the month.

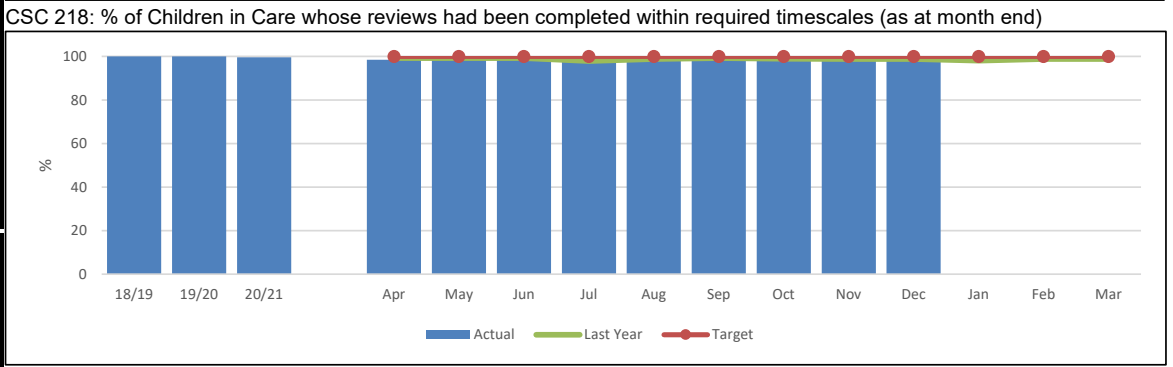
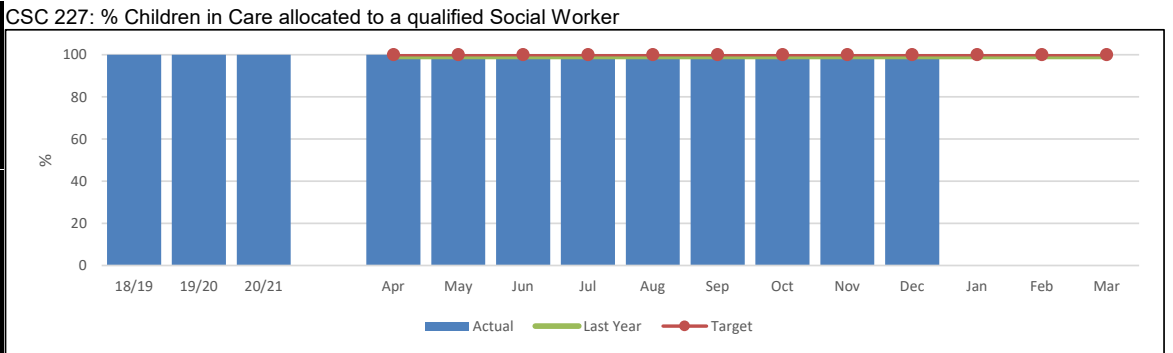
To improve compliance with local authorities' legal requirements under the Review of Children's cases Regulations 1991. The purpose of the review is to consider the plan for the child's welfare, to monitor the progress of the plan and amend it as necessary in light of changed information and circumstances. The statutory intervals are within 20 working days of placement, then within 3 months and 6 monthly thereafter, but reviews may be rescheduled or held inside these intervals if there are significant changes to the child's care plan.

**PERFORMANCE ANALYSIS**

100% of Children in Care (CiC) are allocated to a qualified social worker.

98.4% of the reviews have been completed within required timescales.

		CSC 227	CSC 218
		% Children in Care allocated to a qualified Social Worker	% of Children in Care whose reviews had been completed within required timescales (as at month end)
<b>IN MONTH PERFORMANCE</b>	<b>Target</b>	<b>100</b>	<b>100</b>
	Apr-21	100.0	98.5
	May-21	100.0	99.2
	Jun-21	100.0	99.3
	Jul-21	100.0	98.1
	Aug-21	100.0	98.3
	Sep-21	100.0	98.4
	Oct-21	100.0	98.4
	Nov-21	100.0	98.4
	Dec-21	100.0	98.4
	Jan-22		
	Feb-22		
	Mar-22		
<b>ANNUAL TREND</b>	2018/19	100.0	100.0
	2019/20	100.0	100.0
	2020/21	100.0	99.6
	2021/22	100.0	98.4

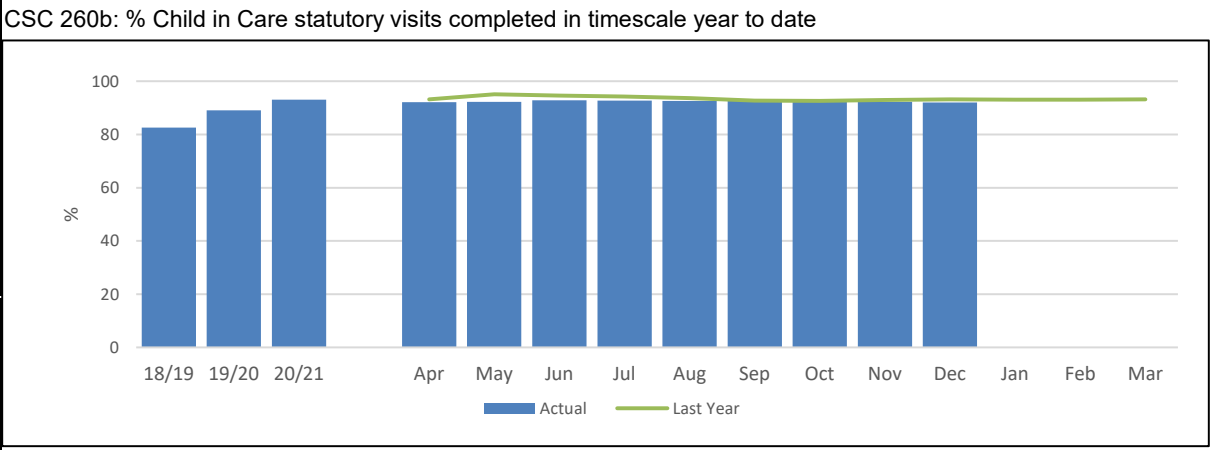
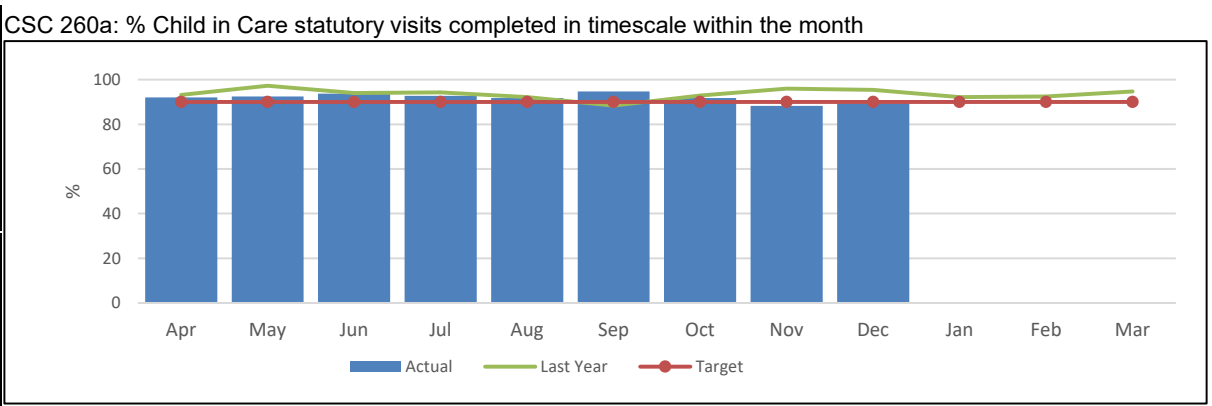


## CHILDREN IN CARE - STATUTORY VISITS

<b>DEFINITION</b>	Percentage of Children in Care who had all statutory visits completed within required timescales and percentage of Children in Care's statutory visits completed within timescales each month and year to date.
-------------------	---

<b>PERFORMANCE ANALYSIS</b>	During Q3 2021/22, 89.8% of statutory visits for Children in Care (CiC) were completed in timescale. This is a small decrease compared with Q3 2020/21 when there were 93.1% of visits completed in timescale.
-----------------------------	--

		CSC 260a	CSC 260b
		% Child in Care statutory visits completed in timescale within the month	% Child in Care statutory visits completed in timescale year to date
<b>IN MONTH PERFORMANCE</b>	<b>Target</b>	<b>90</b>	<b>90</b>
	Apr-21	92.1	92.1
	May-21	92.5	92.3
	Jun-21	93.7	92.8
	Jul-21	92.7	92.8
	Aug-21	91.7	92.6
	Sep-21	94.8	92.9
	Oct-21	91.7	92.7
	Nov-21	88.3	92.2
	Dec-21	89.4	92.0
	Jan-22		
	Feb-22		
	Mar-22		
<b>ANNUAL TREND</b>	2018/19	82.6	82.6
	2019/20	89.0	89.0
	2020/21	93.1	93.1
	2021/22	89.4	92.0



**CHILDREN IN CARE - PLACEMENTS**

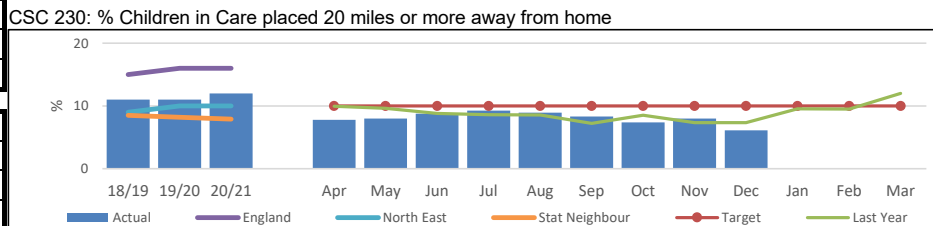
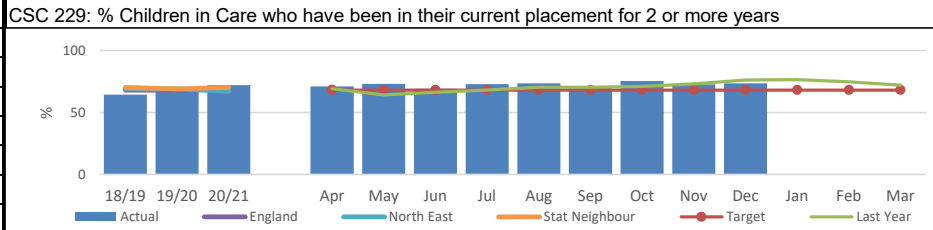
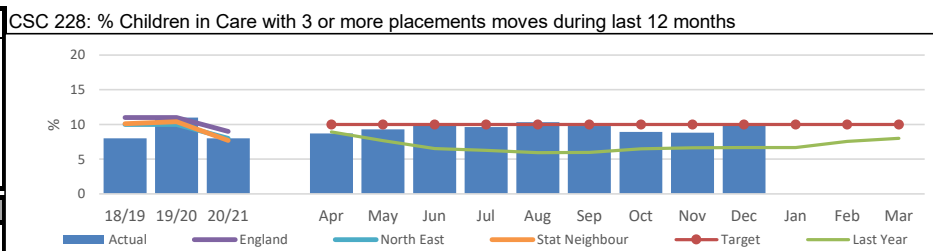
**DEFINITION**  
 Of those Children in Care at the point in time (excluding series of short-term placements), the percentage that had 3 or more separate placements in the previous 12 months; who had been in their current placement for 2 or more years. and who were placed more than 20 miles away from their home address.  
 On the whole stability is associated with better outcomes; placement instability has been highlighted as a key barrier to improving educational outcomes. Proper assessment and an adequate choice of placements to meet the varied needs of different children are essential if appropriate stable placements are to be made. Inappropriate placements often break down and lead to frequent moves. Nevertheless, the circumstances of some individual children will require 3 or more separate placements during a year if they and others are to be kept safe.

**PERFORMANCE ANALYSIS**  
 10.0% of Children in Care, as at December 2021, have had 3 or more placements within the previous 12 months. This is at internal target (10.0%), and above the 6.7% as at December 2020.  
 Currently, 73.5% of our Children in Care aged under 16 (who have been looked after for at least 2.5 years) have been in their current placement continuously for at least 2 years. This is a lower percentage compared with December 2020 (76.1%) but still positively above the 68% target.  
 6.1% of our Children in Care have been placed 20 or more miles away from home as at December 2021. This is positively below target of 10% and that of December 2020 (7.4%). All these placements have been confirmed by team managers to be appropriate for the child enabling them to have the best support either with family links or specialised care.

CSC 228	CSC 229	CSC 230
% Children in Care with 3 or more placements moves during last 12 months	% Children in Care who have been in their current placement for 2 or more years	% Children in Care placed 20 miles or more away from home

IN MONTH PERFORMANCE	Target	10%	68%	10%
	Apr-21	8.7	70.9	7.8
	May-21	9.3	73.0	8.0
	Jun-21	9.8	69.1	8.8
	Jul-21	9.6	72.9	9.2
	Aug-21	10.3	73.5	8.9
	Sep-21	9.8	69.8	8.3
	Oct-21	8.9	75.2	7.4
	Nov-21	8.8	72.7	8.0
	Dec-21	10.0	73.5	6.1
	Jan-22			
	Feb-22			
	Mar-22			

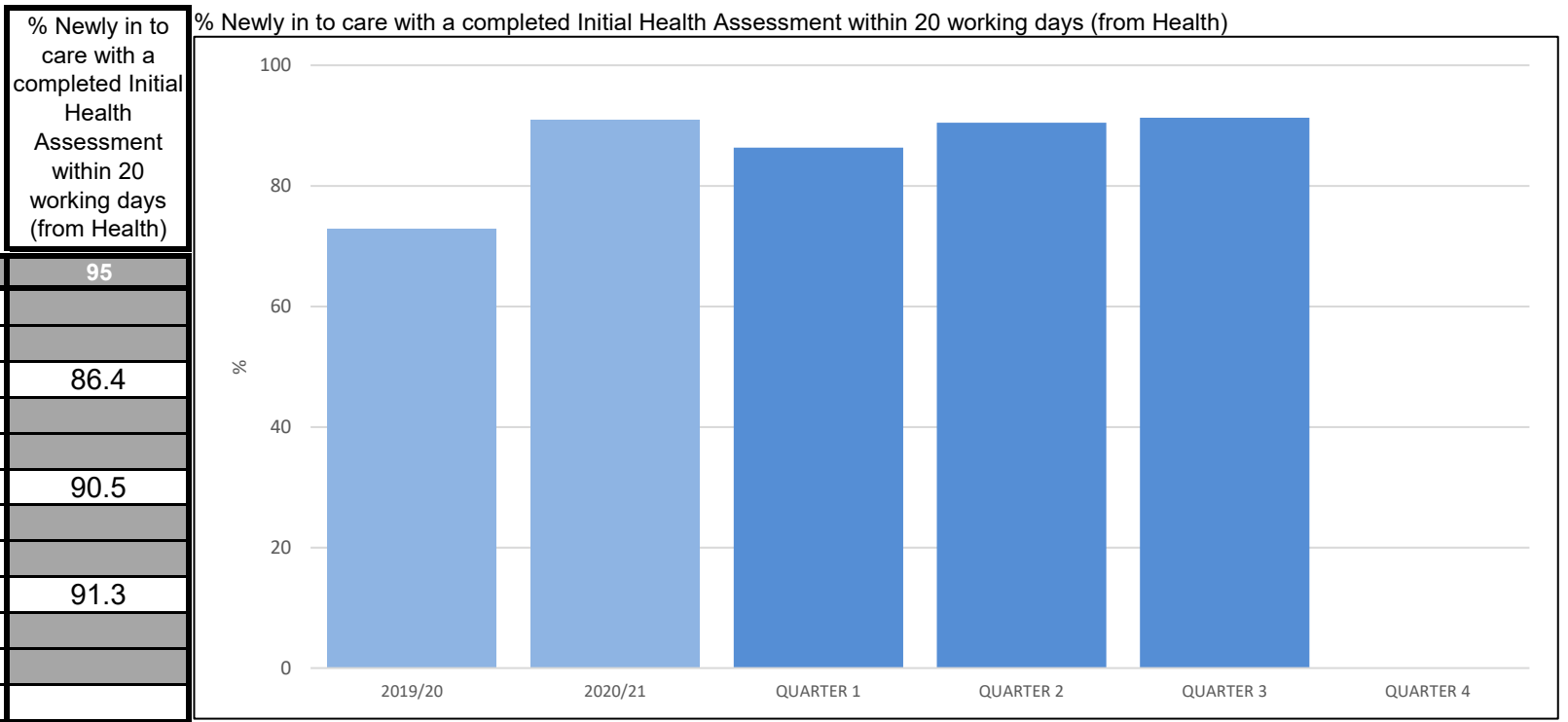
ANNUAL TREND	2018/19	8.0	64.4	11.0
	2019/20	11.0	70.0	11.0
	2020/21	8.0	72.0	12.0
	2021/22	10.0	73.5	6.1



**CHILDREN IN CARE - INITIAL HEALTH ASSESSMENTS**

**DEFINITION** Percentage of Initial Health Assessments completed within 20 working days of a child coming into our care year to date (data from Health), and percentage of IHA forms returned to Health within 7 working days.

**PERFORMANCE ANALYSIS** 91.3% of children newly in care were seen by CDDFT within their timescale of 20 days during Q3 2021/22.



IN MONTH PERFORMANCE	Target	95
	Apr-21	
	May-21	
	Jun-21	86.4
	Jul-21	
	Aug-21	
	Sep-21	90.5
	Oct-21	
	Nov-21	
	Dec-21	91.3
	Jan-22	
	Feb-22	
	Mar-22	

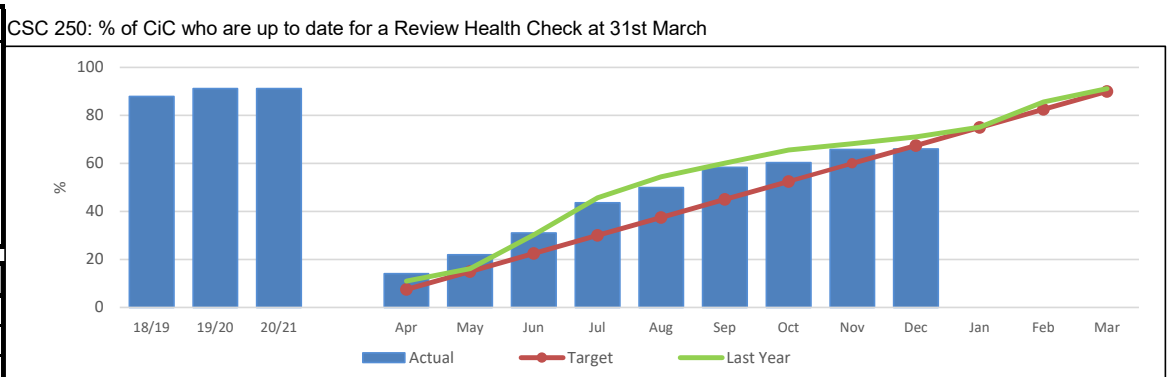
ANNUAL TREND	2018/19	86.2
	2019/20	72.9
	2020/21	90.9
	2021/22	89.4%

**CHILDREN IN CARE - HEALTH ASSESSMENTS**

**DEFINITION**  
 Of the Children in Care (CiC) at 31 March who had been in care continuously for at least 12 months, the percentage who have had their Review Health Assessment (RHA) completed and the percentage who have an up to date Health Check.  
 Children in Care share many of the same health risks and problems as their peers, but often to a greater degree. These indicators track the participation of our Children in Care's health as a proxy for monitoring the general health and wellbeing of the children, as well as providing a check on the effectiveness of joint working with Health to secure good health outcomes for Children in Care.

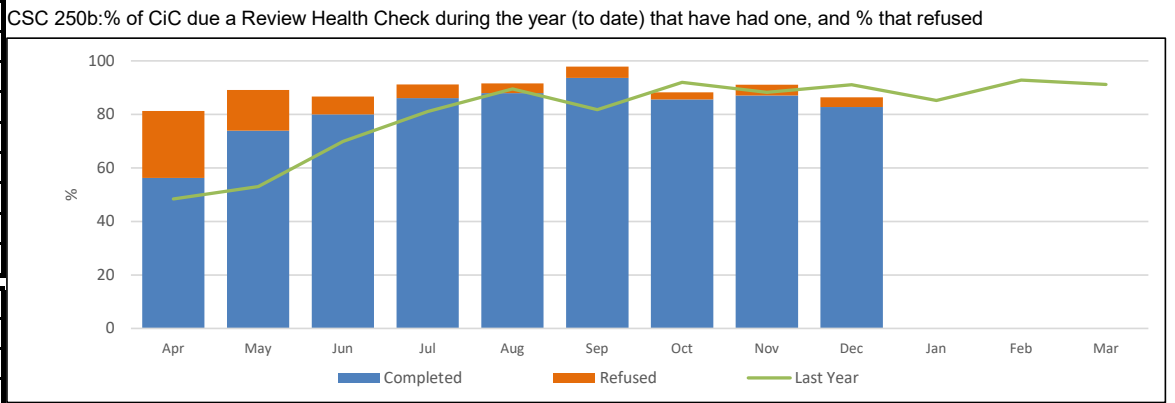
**PERFORMANCE ANALYSIS**  
 82.7% of children due a review health assessment by end of Q3 2021/22 have had one completed.  
 Of the children who did not have a health review, 3.6% of them are refusing to have one completed at this time. Although they are refusing, they are continually reminded of the benefits of having a check-up and encouraged to take part.

CSC 250		CSC 250b
The % of CiC who have an up to date Health Checks (excludes any who will turn 18 before 31st March)	The % of CiC who were due a Review Health Check (year to date) who refused to engage	The % of Children in Care who were due a Review Health Check year to date and were completed and recorded



**IN MONTH PERFORMANCE**

	Target	90%	90%
Apr-21	14.1	25.0	56.3
May-21	22.0	15.2	73.9
Jun-21	31.0	6.7	80.0
Jul-21	43.6	5.1	86.1
Aug-21	50.0	3.6	88.0
Sep-21	58.4	4.2	93.7
Oct-21	60.4	2.7	85.6
Nov-21	65.8	4.0	87.1
Dec-21	66.0	3.6	82.7
Jan-22			
Feb-22			
Mar-22			



**ANNUAL TREND**

Year	90%	90%
2018/19	87.9	87.9
2019/20	91.2	93.3
2020/21	91.2	91.2
2021/22	66.0	82.7

## CHILDREN IN CARE - DENTAL HEALTH ASSESSMENTS

**DEFINITION**

Of the Children in Care (CiC) at 31 March who had been in care continuously for at least 12 months, the percentage who had had their teeth checked by a dentist during the previous 12 months, and the percentage who had had an annual health check during the previous 12 months.

Children in Care share many of the same health risks and problems as their peers, but often to a greater degree. These indicators track the participation of our Children in Care with dental checks as a proxy for monitoring the general health and wellbeing of the children, as well as providing a check on the effectiveness of joint working with Health to secure good health outcomes for Children in Care.

**PERFORMANCE ANALYSIS**

80.4% of children due a dental check assessment by end of Q3 2021/22 have had one completed.

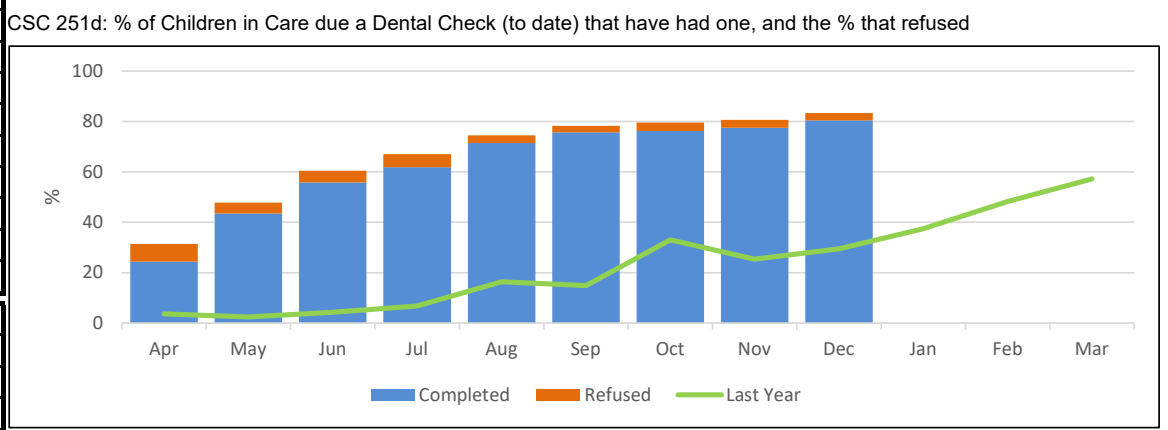
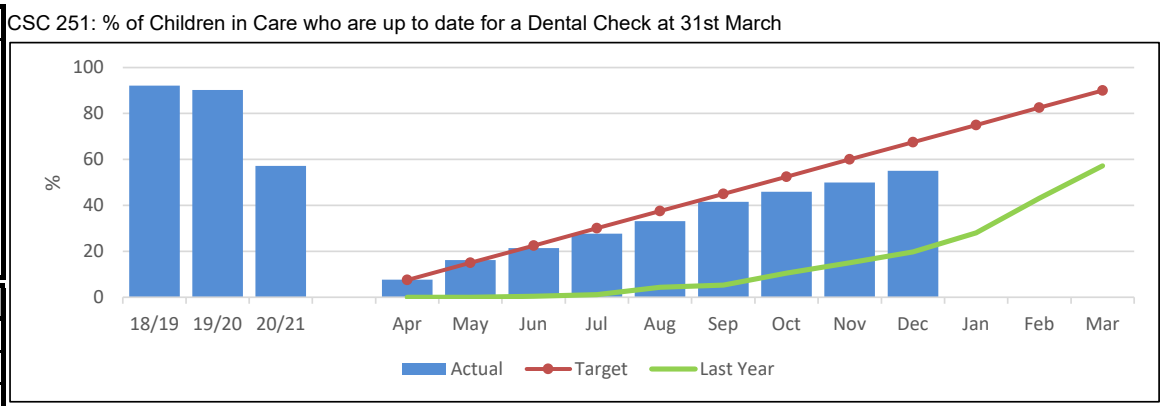
Of the children who did not have a dental check, 2.9% of them are refusing to have one completed at this time. Although they are refusing, they are continually reminded of the benefits of having a check-up and encouraged to take part.

CSC 251		CSC 251d
The % of Children in Care with up to date Dental Checks (excludes any who will turn 18 before 31st March)	The % of Children in Care who were due a Dental Check (year to date) who refused to engage	The % of Children in Care who were due a Dental Check year to date and were up to date by the report date

IN MONTH PERFORMANCE	Target	90%	90%	
	Apr-21	7.7	7.0	24.4
	May-21	16.2	4.3	43.5
	Jun-21	21.4	4.7	55.8
	Jul-21	27.7	5.2	61.9
	Aug-21	33.2	3.1	71.4
	Sep-21	41.6	2.6	75.7
	Oct-21	45.9	3.3	76.2
	Nov-21	50.0	3.1	77.5
	Dec-21	55.0	2.9	80.4
	Jan-22			
	Feb-22			
Mar-22				

ANNUAL TREND	2018/19	2019/20	2020/21	2021/22
	92.1	90.2	57.2	55.0
		3.1	2.8	2.9
	92.1	90.2	57.2	80.4





## CARE LEAVERS

**DEFINITION**  
 The percentage of 'former relevant' care leavers aged 19-21 who were in suitable accommodation at their most recent contact, and the percentage who were not in employment, education or training at their most recent contact. Published data is included for comparison however data submitted to DfE by Local Authorities captures the young person's status around their 19th, 20th, or 21st birthday each year rather than the latest available information. This measures accommodation and employment outcomes for young people formerly in care - a key group at risk of social exclusion. It is intended to increase the proportion of former care leavers who are in suitable accommodation and employment, education or training.

**PERFORMANCE ANALYSIS**  
 100.0% of our care leavers were in suitable accommodation at the end of Q3 2021/22.  
 Of the young people (aged 19-21) as of 31st December 2021 who were Not in Education, Employment or Training (NEET);  
 • 5.9% NEET because of illness or disability  
 • 7.8% NEET because of other circumstances  
 • 3.9% NEET because of pregnancy or parenting.  
 This equates to 17.6% of our care leavers which is positively below the internal target of 30% NEET.  
 19.6% of our care leavers were engaging in education (7.8% of which are in studies beyond A level) and 62.7% of care leavers were in training or employment.

	Target	CSC 286	CSC 294
		% Care Leavers in suitable accommodation	% Care Leavers NEET
	90%	30%	
Apr-21	100.0	100.0	19.1
May-21	100.0	100.0	25.0
Jun-21	100.0	100.0	21.7
Jul-21	100.0	100.0	20.8
Aug-21	100.0	100.0	23.9
Sep-21	100.0	100.0	21.3
Oct-21	100.0	100.0	20.4
Nov-21	100.0	100.0	20.4
Dec-21	100.0	100.0	17.7
Jan-22			
Feb-22			
Mar-22			
<b>ANNUAL TREND</b>	2018/19	96.0	28.0
	2019/20	95.0	27.0
	2020/21	100.0	21.0
	2021/22	100.0	17.7

